

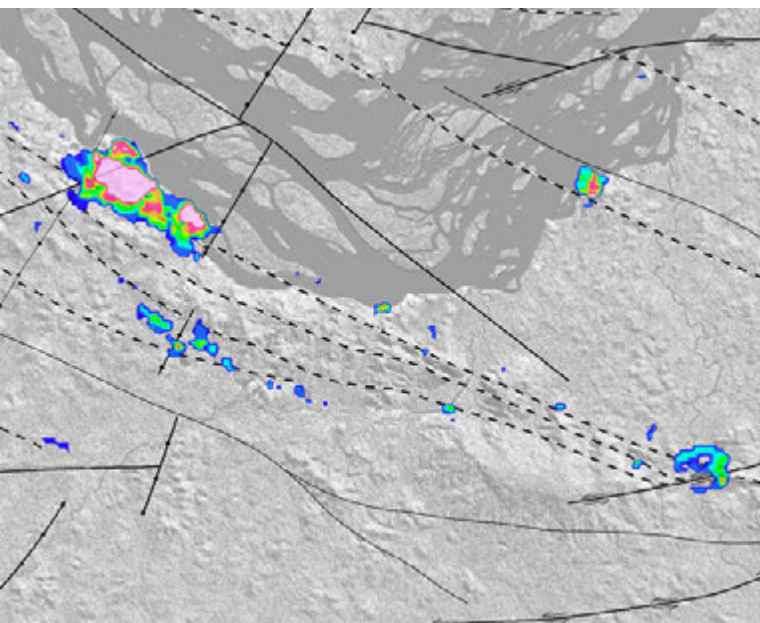
**LEADER IN INNOVATIVE
GEOSPATIAL SOLUTIONS**

**Strategic geospatial
information
Mining and land
management**

The science of turning data into

Effigis Geo-Solutions is a Canadian company who continually innovates to provide mining companies and governments with solutions that generate strategic information based on geospatial data.

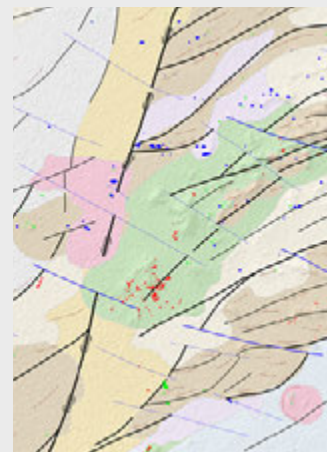
Building on our expertise, our solutions increase our clients' chances of discovery, minimize their financial risk and enable them to closely monitor their mining cycle from exploration to reclamation.



Exploration

Our novel approaches bring you closer to your targets and improve your chances of discovery. Coupling multiples techniques, including artificial intelligence, we manage to extract precise information in terms of baseline conditions, geology, drilling and mining potential.

Case study



Operations

Effigis designs solutions for mining operations that help you minimize extraction risks.

- Monitoring of resources and extraction activities;
- Tailings monitoring;
- Environmental impact assessment;
- Infrastructure planning and site development.



intelligence

Our efficiency is based on a unique approach: extracting meaningful information by combining satellite imagery with artificial intelligence, geology, geophysics and geochemistry. Our experts turn data into strategic information about structure, chemistry and geology and generate high precision targeting maps.

Effigis has been mandated to guide exploration activities in the Brazilian Amazon Rainforest for **Belo Sun Mining**, a Canadian company specialized in exploration. For this purpose, we put forward targets for gold, which we did by obtaining a better geological and metallogenic understanding of the area.

The mandate was challenging given the vastness of a territory characterized by a dense forest canopy and limited availability of existing geological data.

We tackled the challenge by combining remote predictive mapping and geostatistical processing techniques.

Results:

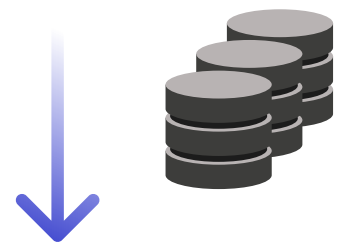
- Mapping of lithological and alteration domains;
- Structural, hydrothermal, and geodynamic evolution mapping;
- Narrowing down of the investigation area to 2% of the land;
- Validation of 86% of the identified targets.

Geospatial Information Management

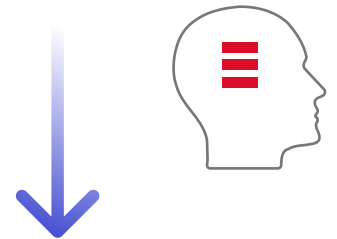
We leverage our expertise in geospatial database management to develop applications from which data can be queried and visualized under a standardized form.

- Data assessment, integration and analysis;
- Development of customized databases;
- Geoportal design and development.

Databases



Analysis



Dissemination



Reclamation

Our solutions help you ensure and demonstrate the success of your reclamation activities.

- Revegetation;
- Environmental monitoring;
- Land use mapping.



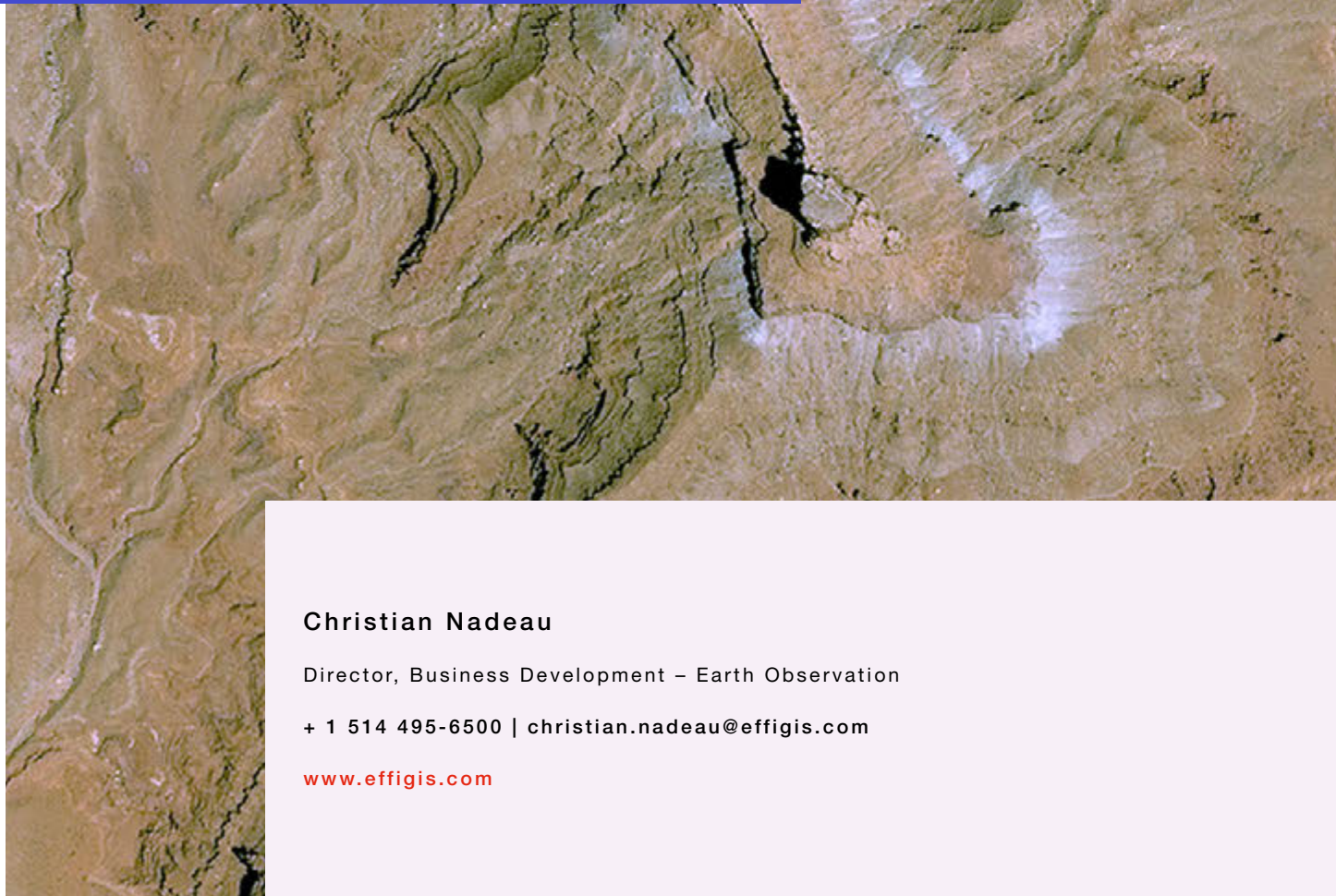
Techniques

- Remote Predictive Mapping (RPM);
- Image processing and spectral analysis;
- 3D geological modelling;
- Photogrammetry and planimetry;
- Interferometry;
- Change detection and multi-temporal monitoring;
- Artificial intelligence.

Typical sources of data

- Satellite images;
- Lidar data;
- Geological and topographic data;
- Geophysics and geochemistry surveys;
- Drilling data.

réoscopiques
artificielle
logique 3D
adonnées
laboratoire



Christian Nadeau

Director, Business Development – Earth Observation

+ 1 514 495-6500 | christian.nadeau@effigis.com

www.effigis.com